



CrwMOT

C R O W N I N G M O T O R



Faster*

Stronger*

Multi Voltage

**USER
MANUAL**

*Compared with the competitors

WHY CROWNING IS NEEDED



During bending a sheet metal on a press brake, the applied down force on the top beam will have a reaction force on the lower table.

As the applied force is at maximum level on both ends, when the length of the machine increases, concave shape will occur on the top beam and on the lower table.

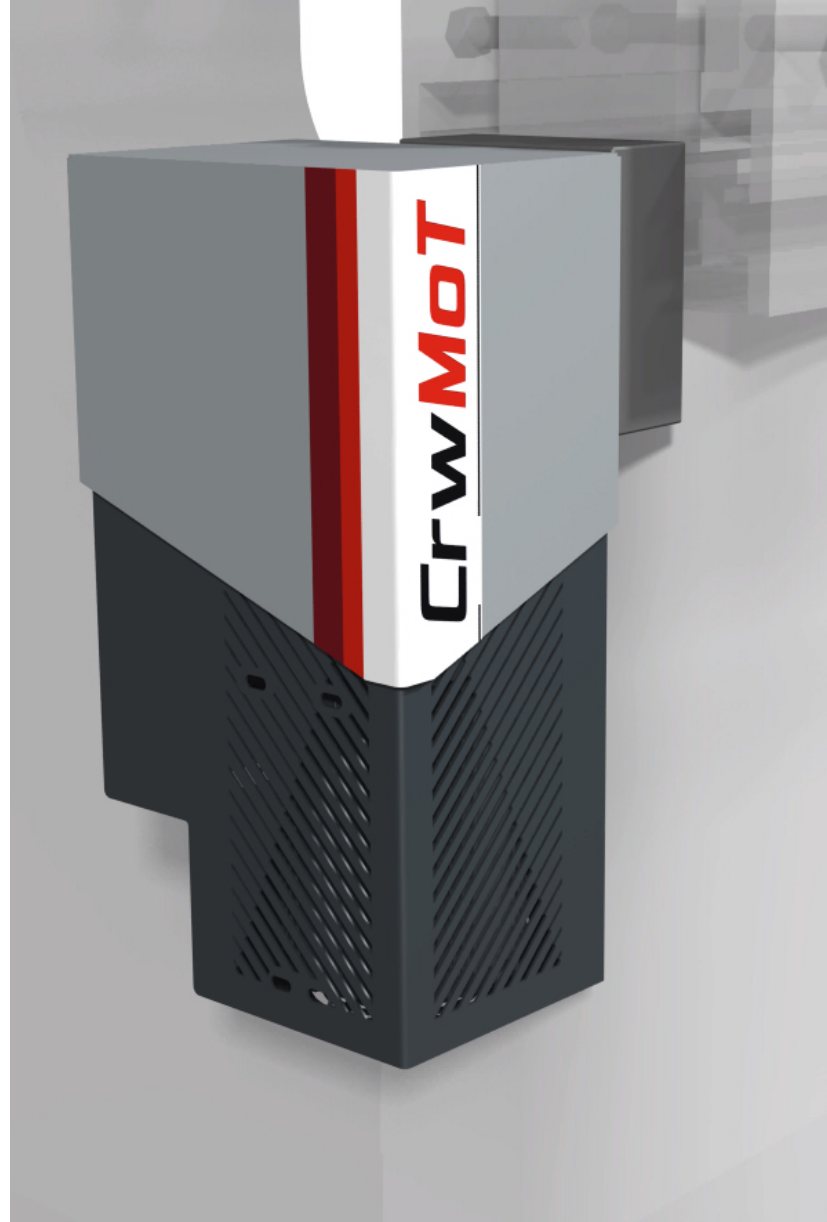
Due to this deflection deformation on the top beam and lower table, there will not be a constant bending angle on the workpiece.

To compensate the deflection deformation on the middle section, crowning system is needed.

With the crowning system, an excellent accuracy of bending can be achieved precisely over the full length of the workpiece with a constant bending angle.

CrwMOT Crowning Motors will be your **first choice** for your automatic crowning systems **because of**:

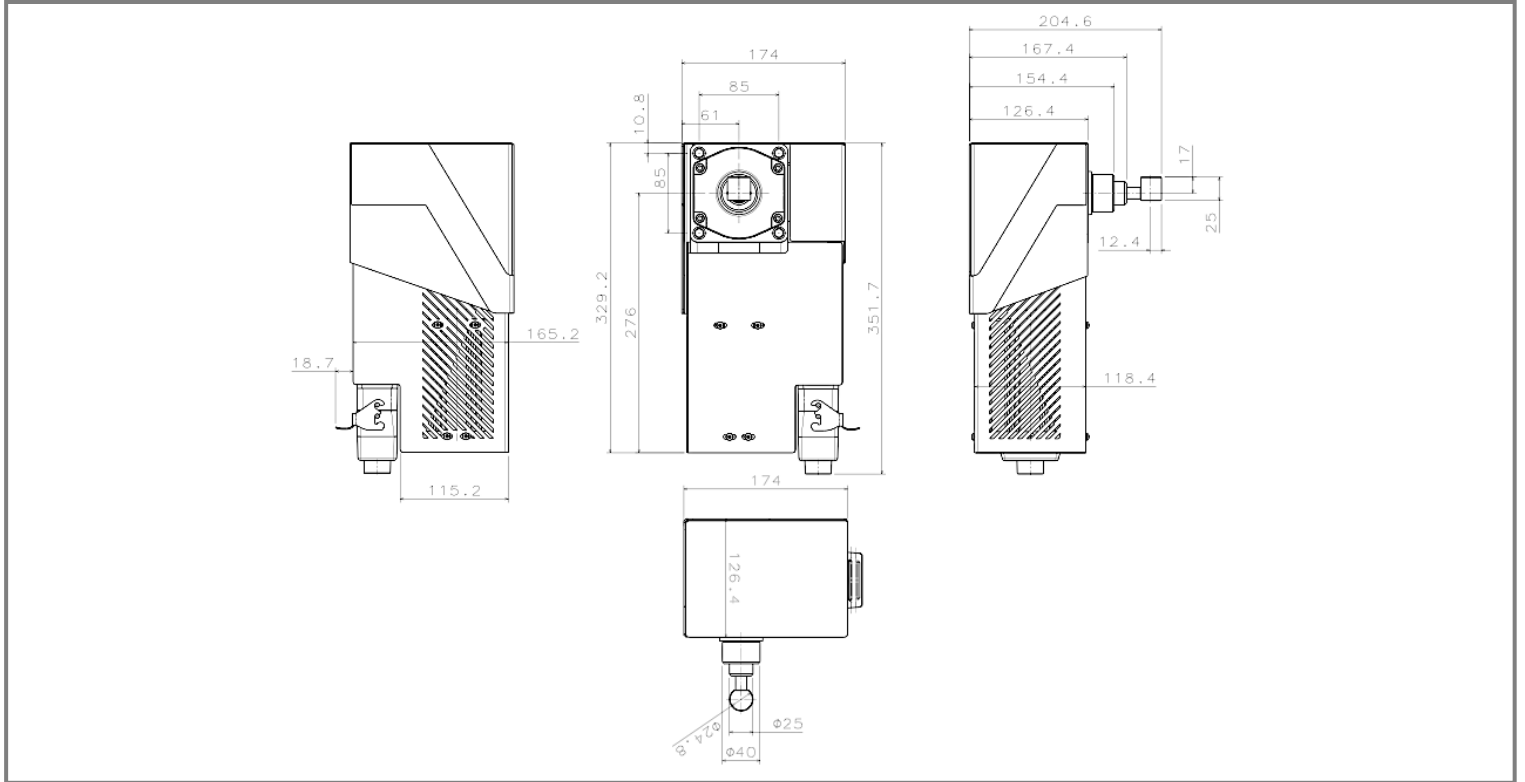
- ✓ Faster working capacity
- ✓ Stronger design
- ✓ No Transformer needs to be used all over the World...



FEATURES of CrwMOT

- » High Torque Capacity
- » Strong Design
- » Easy Installation
- » Oil Immersed System
- » Manual Limit – Switch Adjustment
- » Light Weight
- » High Speed Working Capacity
- » No Extra Transformer Needs
- » Crowning Shaft Included

TECHNICAL FEATURES & ELECTRICAL CONNECTIONS



General Dimensions of The CrwMOT

| | |
|-----------------|---------------------|
| Motor Speed | 1350 rpm |
| Reduction Ratio | 1 : 30 |
| Motor Power | 0,14 KW |
| Motor Weight | 10,5 Kg |
| Loaded Current | 0,3 A (λ) |
| | 1,5 A (Δ) |

Technical Specifications of The CrwMOT



GENERAL & SAFETY & WARRANTY INFORMATION

- » During carriage & assembling and operating of the CrwMOT, operators must be equipped with the safety protection wearing:



- » Electrical connections and the mechanical connections must be done by the qualified operators.
- » During the electrical connections, be sure that the machine is disconnected from the mains.
- » As the motor is filled with the lubricating oil in factory, no need to refill lubrication oil.
- » Assembling operation and limit switch adjustment must be done carefully.
- » Product itself sealed well against the oil leakage. The Operator must be careful against sealing during assembling / disassembling of the product.
- » Against overheating, the motor surface should keep clean for better heat dissipation.
- » Maintenance of the motor must be performed by a qualified operator.
- » In case of any abnormal working condition on the motor, operation must be stopped immediately and motor must be checked by the maintenance operator.
- » Crowning shaft is included to your purchase. No transformer needs to be used with CrwMOT.
- » DORAY MAKİNA SANAYİ VE TİCARET LİMİTED ŞİRKETİ guarantees the CrwMOT Crowning Motor and its components for a period of 2 years from the date of delivery against the design, material defects used in manufacturing. If the failure is caused by disoperation, it will not be under Doray Machinery responsibility.



Serial number

Sales date .../.../.....

Company Contact Details

DORAY MAKINA LIMITED SIRKETI

Address: Alaaddinbey Mh. 637. Sok.

İşyerleri Sitesi No:7/1

Nilüfer / Bursa – Türkiye

VKN - 3101267584

Telephone: +90 224 413 21 82 / +90 555 624 37 27

Email: info@doraymakina.com

Web: <http://www.doraymakina.com>



CrwMOT

CROWNING MOTOR

DORAY MAKİNA SAN. TİC. ve LTD. ŞTİ.

Alaaddin Bey Mah. 637. Sok.
İşyerleri Sitesi No 7/1
Nilüfer / BURSA

www.doraymakina.com